

Write your name here

Surname

Other names

Centre Number

Candidate Number

**Edexcel GCSE**

## **History B (Schools History Project)**

**Unit 2: Schools History Project Depth Study  
Option 2B: The American West, c1840–c1895**

Wednesday 23 January 2013 – Morning  
**Time: 1 hour 15 minutes**

Paper Reference

**5HB02/2B**

**You do not need any other materials.**

Total Marks

### **Instructions**

- Use **black** ink or ball-point pen.
- **Fill in the boxes** at the top of this page with your name, centre number and candidate number.
- Answer Questions 1 and 2, **EITHER** Question 3 **OR** 4 and then **EITHER** Question 5(a) and 5(b) **OR** 6(a) and 6(b).
- Answer the questions in the spaces provided  
– *there may be more space than you need.*

### **Information**

- The total mark for this paper is 54.
- The marks for **each** question are shown in brackets  
– *use this as a guide as to how much time to spend on each question.*
- Questions labelled with an **asterisk** (\*) are ones where the quality of your written communication will be assessed.
- The marks available for spelling, punctuation and grammar are clearly indicated.

### **Advice**

- Read each question carefully before you start to answer it.
- Keep an eye on the time.
- Check your answers if you have time at the end.

Turn over ►

P41201A

©2013 Pearson Education Ltd.

1/1/1



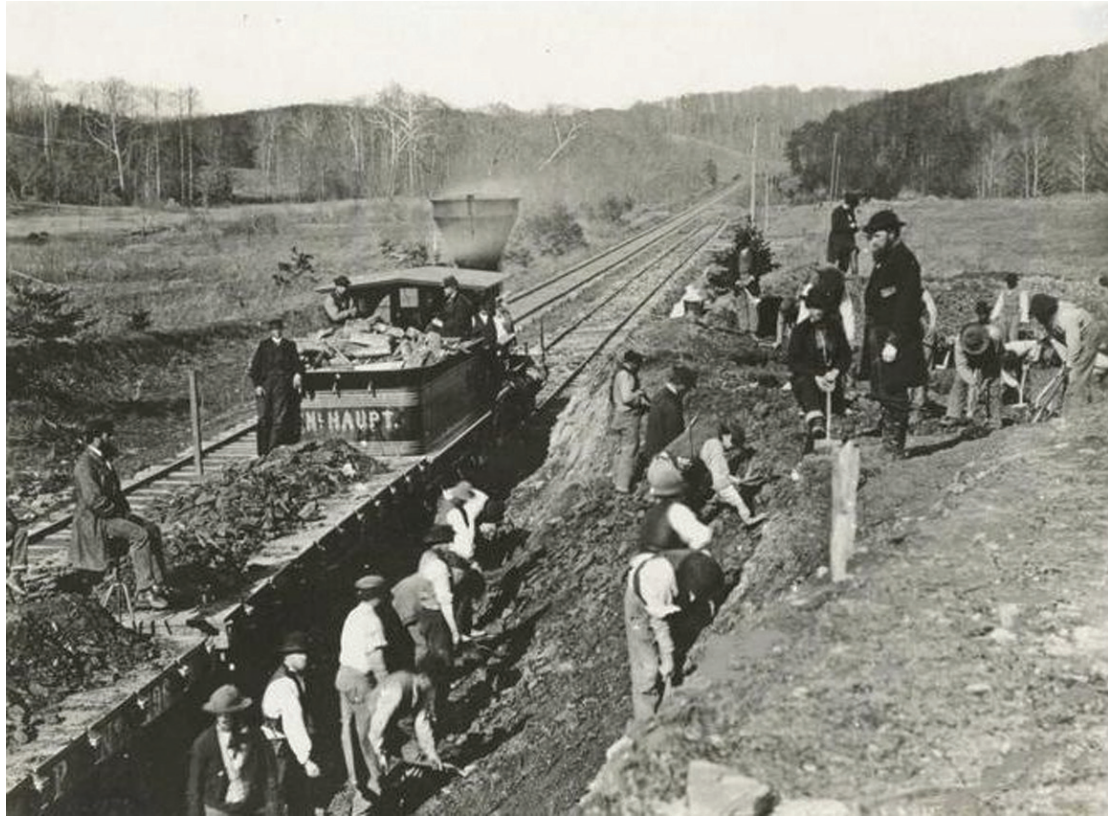
**PEARSON**

**Answer Question 1 AND Question 2.**

**Question 1**

Study Source A.

**Source A:** A photograph taken in the 1860s during the building of a railroad.



1 What can you learn from Source A about the building of railroads across America?

(4)

.....

.....

.....

.....

.....

.....

.....

.....

.....

.....

.....

.....

.....

.....

.....

.....

.....

.....

.....

.....

.....

.....

.....

**(Total for Question 1 = 4 marks)**



2 The boxes below show two ways in which homesteaders were helped.

Choose **one** and explain its importance in helping homesteaders to live on the Plains.

(9)

New farming methods

Technology

Handwriting practice area consisting of 20 horizontal dotted lines.





**Answer EITHER Question 3 OR Question 4.**

**EITHER**

- 3** In what ways did the culture of the Plains Indians help them to live successfully on the Plains?

(12)

You may use the following in your answer and any other information of your own.

- The Plains Indians believed in spirits.
- Plains Indian tribes sometimes left elderly members behind when they moved on.
- Plains Indian tribes included medicine men.

**(Total for Question 3 = 12 marks)**

**OR**

- 4** Why was it so difficult for the US government to solve problems of law and order in the American West?

(12)

You may use the following in your answer and any other information of your own.

- Mining took place in very remote areas.
- Vigilantes sometimes lynched their suspects.
- By 1855 there were over 500 saloons in San Francisco.

**(Total for Question 4 = 12 marks)**



Indicate which question you are answering by marking a cross in the box ☒.  
If you change your mind, put a line through the box ~~☒~~  
and then indicate your new question with a cross ☒.

Chosen Question Number: **Question 3** ☒      **Question 4** ☒

Area with horizontal dotted lines for writing answers.



Handwriting practice area with 20 horizontal dotted lines.





Handwriting practice area with 25 horizontal dotted lines.



**Answer EITHER Question 5 OR Question 6.**

**You must answer both parts of the question you choose.**

**Spelling, punctuation and grammar will be assessed in \*(b).**

**EITHER**

**5** (a) Describe the reasons for the Mormons' successful settlement at Salt Lake City. (9)

\*(b) 'The Battle of the Little Big Horn in 1876 was a great victory for the Plains Indians.'  
Do you agree? Explain your answer. (16)

You may use the following in your answer and any other information of your own.

- It is estimated that only 58 Plains Indians were killed during the Battle of the Little Big Horn.
- By the end of 1876 most Plains Indians had returned to the reservations.
- 1877: Crazy Horse was captured by the US army.

**(Total for spelling, punctuation and grammar = 4 marks)**

**(Total for Question 5 = 29 marks)**

**OR**

**6** (a) Describe the role of John Iliff in the development of the cattle industry. (9)

\*(b) 'The cattlemen were to blame for the Johnson County War (1892)'. Do you agree?  
Explain your answer. (16)

You may use the following in your answer and any other information of your own.

- Most of the land in Wyoming did not belong to anyone.
- The cattlemen had set up the Wyoming Stock Growers Association.
- July 1889: Jim Averill and Ella Watson were lynched for cattle rustling.

**(Total for spelling, punctuation and grammar = 4 marks)**

**(Total for Question 6 = 29 marks)**













**BLANK PAGE**

